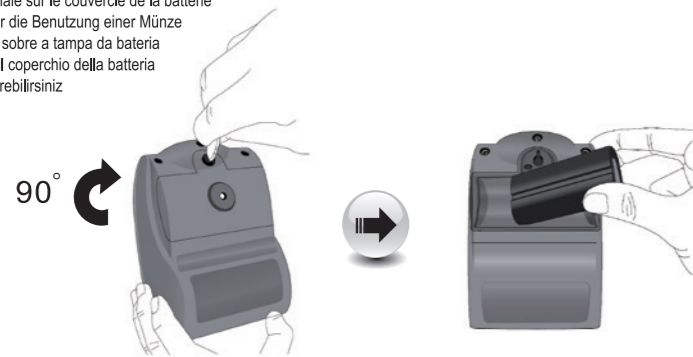


Battery Installation
 安裝電池
 安裝電池
 Instalación de batería
 Installation des piles
 Installation der Batterie
 instalação de bateria
 Installazione Batteria
 Pil takılması

- Recommend the use of coin to turn on the battery cover
- 建議使用硬幣打開電池蓋
- 建议使用硬幣打开电池盖
- Recomiende a usar la moneda para abrir la tapa de la batería
- Recommander l'utilisation de pièce de monnaie sur le couvercle de la batterie
- Zum Öffnen des Batteriefachs empfehlen wir die Benutzung einer Münze
- Recomendamos o uso de moeda para girar sobre a tampa da bateria
- Consigliamo l'uso di una moneta per aprire il coperchio della batteria
- Pil kapagını madeni bir para yardımı ile çevirebilirsiniz



Warning:

- If battery not properly handled could cause an explosion. • Do not disassemble the battery, or battery fire destroyed.
- Keep the battery out of children's reach. • Please use dedicated charger. • Follow local government or law properly deal waste battery.

警告:

- 電池若未妥善處理，可能會導致爆炸。 • 請勿拆卸電池，或用火銷毀電池。 • 請將電池放置於兒童拿不到的地方。
- 請使用專用充電器充電。 • 請依照當地政府或法律規定妥善處理廢棄電池。

警告:

- 電池若未妥善處理，可能會導致爆炸。 • 請勿拆卸電池，或用火銷毀電池。 • 請將電池放置於兒童拿不到的地方。
- 請使用專用充電器充電。 • 請依照當地政府或法律規定妥善處理廢棄電池。

Atención:

- Si batería no maneja correctamente podría causar la explosión. • No desarme la batería, ni acerca batería al fuego.
- Mantenga la batería fuera de alcance de niño. • Favor use el cargador de batería indicado. • Siga la ley local para reciclar la batería superflua.

Avertissement:

- Si la batterie n'est pas correctement traitée peut provoquer une explosion. • Ne pas démonter la batterie ou une batterie de feu a détruit.
- Gardez la batterie hors de portée des enfants. • S'il vous plaît utiliser le chargeur dédié.
- Suivre gouvernement local ou de droit bien déchet de pile face.

Warnung:

- Unsachgemäße Behandlung der Batterie kann zur Explosion führen. • Beschädigen Sie nicht die Batterie und werfen Sie nicht ins Feuer.
- Batterien von Kindern fern halten. • Verwenden Sie das korrekte Ladegerät. • Batterien gehören nicht in den Abfall, sondern in den Sondermüll.

Atenção:

- Se a bateria não for devidamente tratada pode causar uma explosão. • Não desmonte a bateria ou mantenha a bateria longe do fogo.
- Mantenha a bateria fora do alcance das crianças. • Por favor, utilize carregador recomendado. • Siga a lei local para reciclar a bateria.

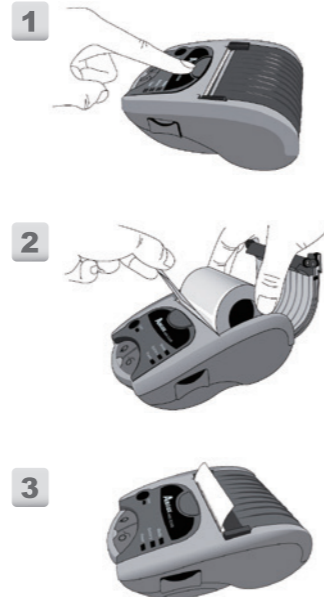
Attenzione:

- Se non adeguatamente trattata la batteria potrebbe provocare un'esplosione. • Non smontare la batteria, o bruciarla. • Tenere la batteria lontano dalla portata dei bambini. • Si prega di utilizzare appositi riciclabatterie. • Seguire le leggi locali per lo smaltimento della batteria.

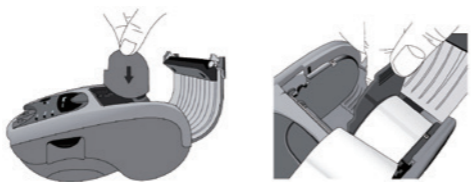
Uyarı:

- Pil doğru şekilde yerleştirilmez ise patlayabilir. • Pili açmayınız ve ateşe atmayınız. • Pili çocuklardan uzak tutunuz.
- Önerilen şarj cihazını kullanınız. • Atıl pilleri yerel Hükümet kanunlarında belirlenen kurallara göre tahrir ediniz.

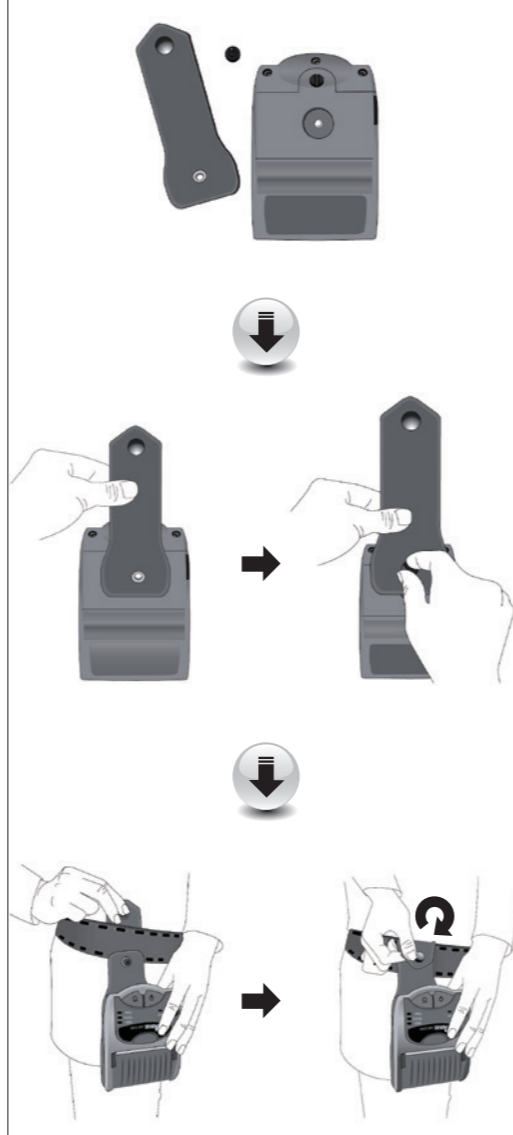
Loading Media
 安裝紙卷
 安裝紙卷
 Carga la media
 médias Carga la
 Material einlegen
 Carregando o papel
 Caricamento Carta
 Kagit Takılması



- Note: If the media roll is smaller, please use the media shield fixed it
- 注意：若紙卷尺寸較小，請使用紙卷隔板固定紙卷
- 注意：若紙卷尺寸較小，請使用紙卷隔板固定紙卷
- Nota: Si el rollo de media es más pequeño, por favor use el ajustador de media para fijarla
- Nota: Si el rollo de médias es más pequeño, l'utilisation por favor el ajustador de fijarla par les médias
- Information: Wenn das Material kleiner ist, verwenden Sie den Adapter
- Nota: Se o rolo de papel é menor, por favor use ao regulador de papel para fixa-lo
- Nota: Se il rotolo della carta è piccolo, si prega di usare "la protezione carta" per fissarlo
- Not : Şayet kullanılan kagit eni dar ise yan tutucuları kullanarak sabitleyiniz



Wearing Belt Strap
 安裝腰帶
 安裝腰帶
 Poner en cinturón
 Le port de ceinture de
 Gürtelclip
 Instalacao do Cinto
 Indossare Belt Strap
 Bel Taşıma kemeri



The user is cautioned that any changes or modifications which not recommended by Argox Information Co. Ltd. could result in the loss of the user's authority to operate the equipment. To ensure compliance, the users must use accessories and peripherals which approved by Argox Information Co. Ltd.



Supplemental Information: This device complies with the requirement of FCC Part 15 Rules. Operation is subject to the following two Conditions:
 (1) This device may not cause harmful interference, and
 (2) this device must accept any interference received, including interference that may cause undesired operation.

INDUSTRY CANADA NOTICE:

This device complies with Industry Canada ICES-003 class A requirements. Cet équipement est conforme a ICES-003 classe A de la norm Industrielle Canadian.



The manufacturer declares under sole responsibility that this product conforms to the following standards or other normative documents:
 EMC: EN 55022:2010, class A
 EN 55024: 2010



Argox Information Co., Ltd certifies that the following products and/or components are compliant with the current requirements of the European Union Restriction on the use of Hazardous Substances (RoHS) Directive, 2011/65/EU.

警告使用者：
 這是甲類的資訊產品，在居住的環境中使用時，可能會造成射頻干擾，在這種情況下，使用者會被要求採取某些適當的對策。

Argox Information Co., Ltd.
 7F., No.126, Ln.235, Baoqiao Rd., Xindian Dist.,
 New Taipei City 231, Taiwan (R.O.C.)
 Tel: +886-2-8912-1121 Fax: +886-2-8912-1124
 https://www.argo.com
 https://www.youtube.com/user/argoxmkt
 email:service@argo.com

Copyright © 2019. Argox Information Co.Ltd., All Rights Reserved.

設備名稱 / 印表機 Equipment name	型號 (型式) : AME-3230B Type designation (Type)					
	限用物質及其化學符號 Restricted substances and its chemical symbols					
單元 Unit	鉛Lead (Pb)	汞Mercury (Hg)	鎘Cadmium (Cd)	六價鉻Hexavalent chromium (Cr ⁶⁺)	多溴聯苯Polybrominated biphenyls (PBBs)	多溴二苯醚Polybrominated diphenyl ethers (PBDE)
印刷電路板組件	—	○	○	○	○	○
機殼	—	○	○	○	○	○
線材	○	○	○	○	○	○
變壓器	—	○	○	○	○	○
印字頭模組	—	○	○	○	○	○

備考 1: "超出0.1 wt%"及"超出0.01 wt%"係指限用物質之百分比含量超出百分比含量基準值。
 Note 1: "Exceeding 0.1 wt%" and "Exceeding 0.01 wt%" indicate that the percentage content of the restricted substance exceeds the reference percentage value of presence condition.

備考 2: "○"係指該項限用物質之百分比含量未超出百分比含量基準值。
 Note 2: "○" indicates that the percentage content of the restricted substance does not exceed the percentage of reference value of presence.

備考 3: "—"係指該項限用物質為排除項目。
 Note 3: The "-" indicates that the restricted substance corresponds to the exemption.



**AME-3230 / AME-3230B / AME-3230W
 Mobile Printer Quick Installation Guide**

快速安裝指南
 快速安裝指南
 Guía Rápida
 Rapide guide
 Bedienerhandbuch
 Guia de Ajuda Rápida
 Guida Rapida
 Mini Kılavuzu



Part No: 49-32301-005
 Revision Date: Apr. 2019